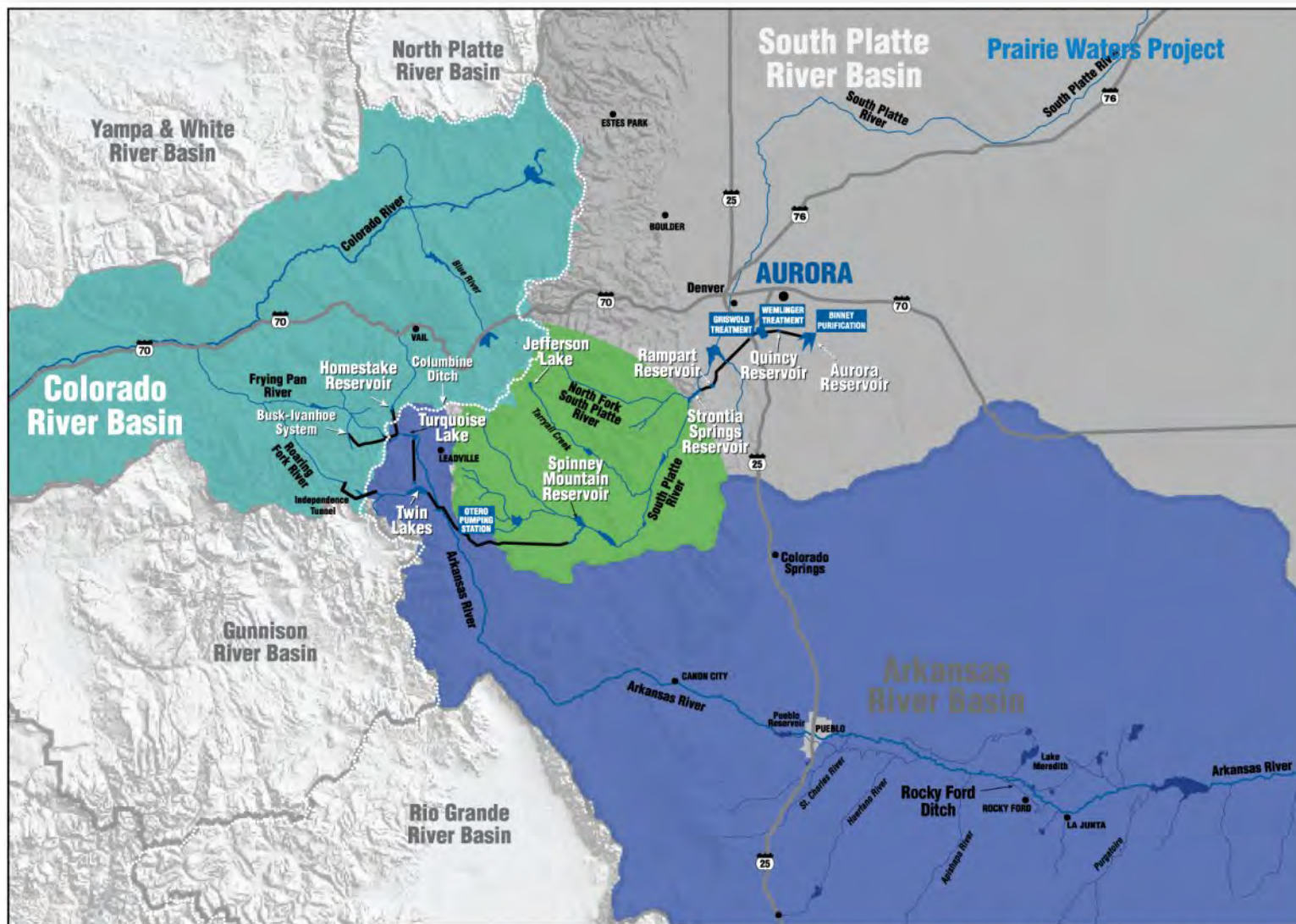


Town Hall Meeting

Drought Stage I Declared for Aurora

AURORA WATER CONSERVATION





- 25% Colorado River Basin
- 25% Arkansas River Basin
- 50% S. Platte River Basin
- 12 reservoirs across the state
- Water can travel up to 180 miles

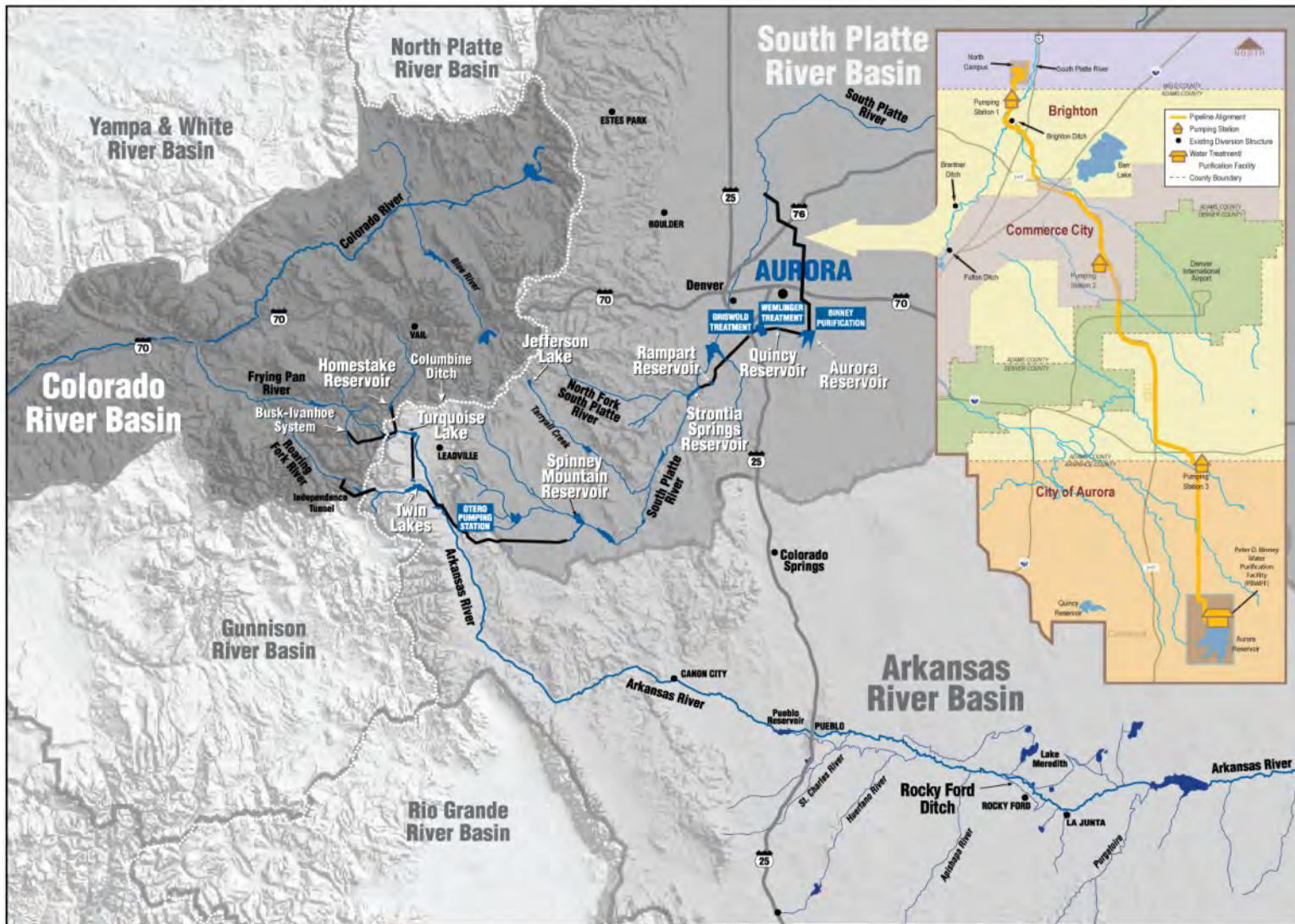


AURORA WATER ♦ **Water Supply**

— Aqueducts, diversion tunnels, pipelines — Streams, canals, reservoirs
 — Major roads, highways — Continental Divide



AURORA
WATER



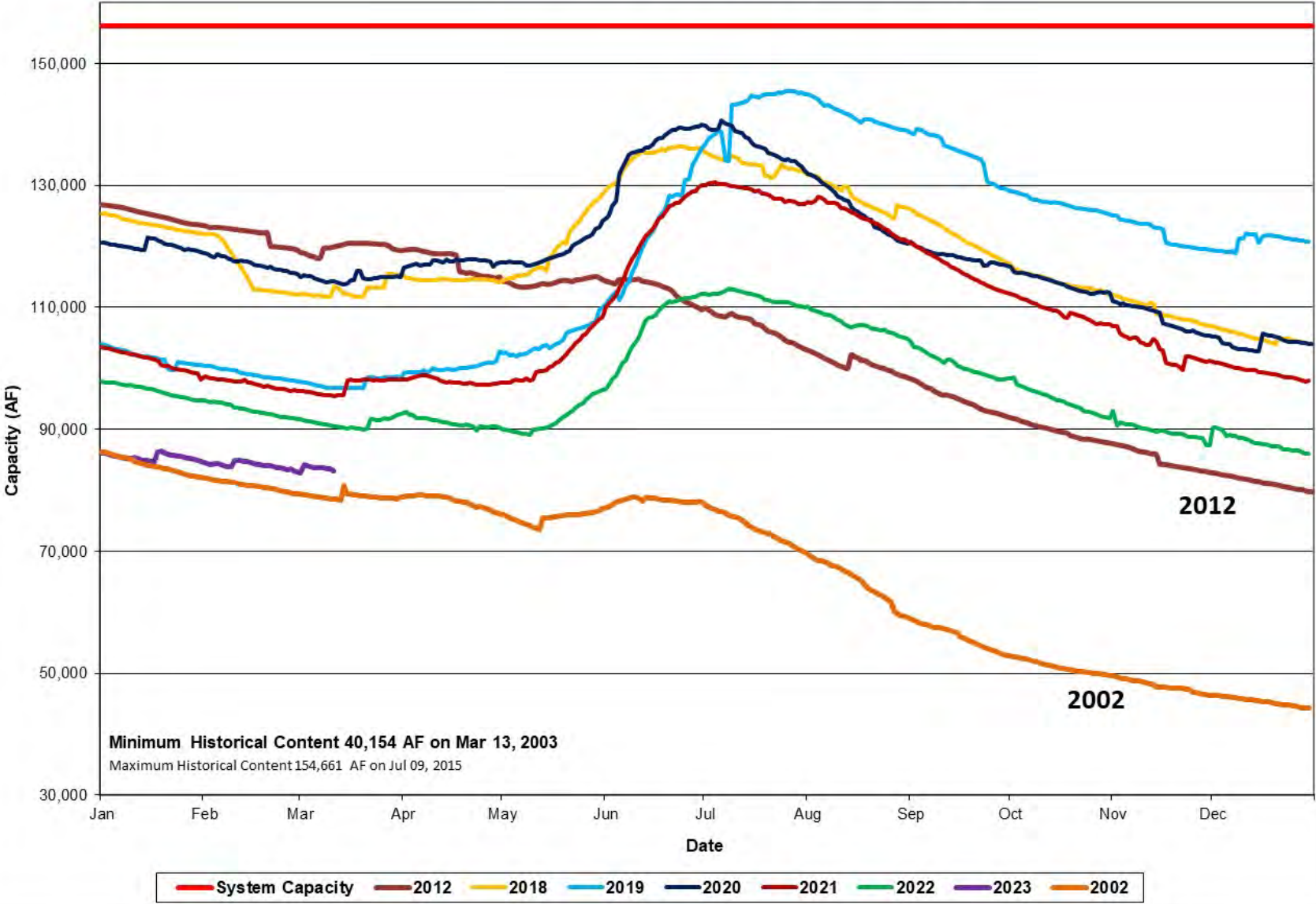
AURORA WATER ♦ **Water Supply**

— Aqueducts, diversion tunnels, pipelines — Streams, canals, reservoirs
 — Major roads, highways — Continental Divide



AURORA
WATER

Aurora Water - Last 5-Year System Storage

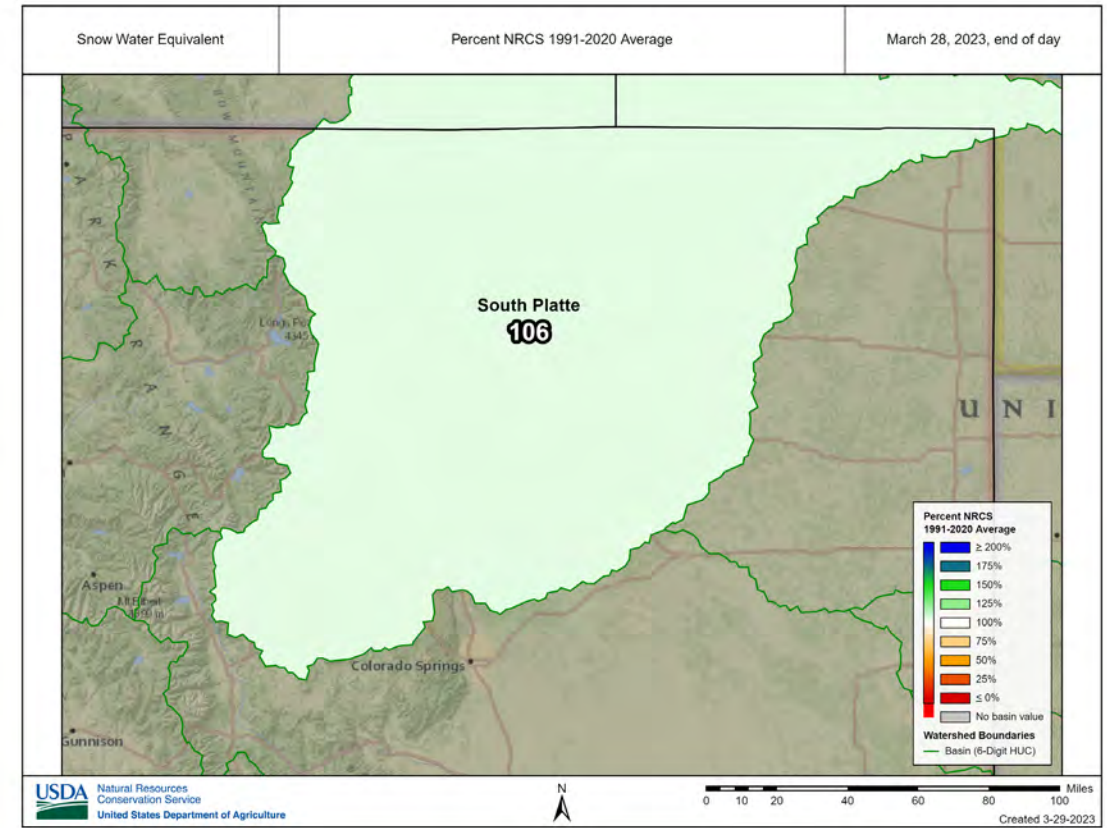
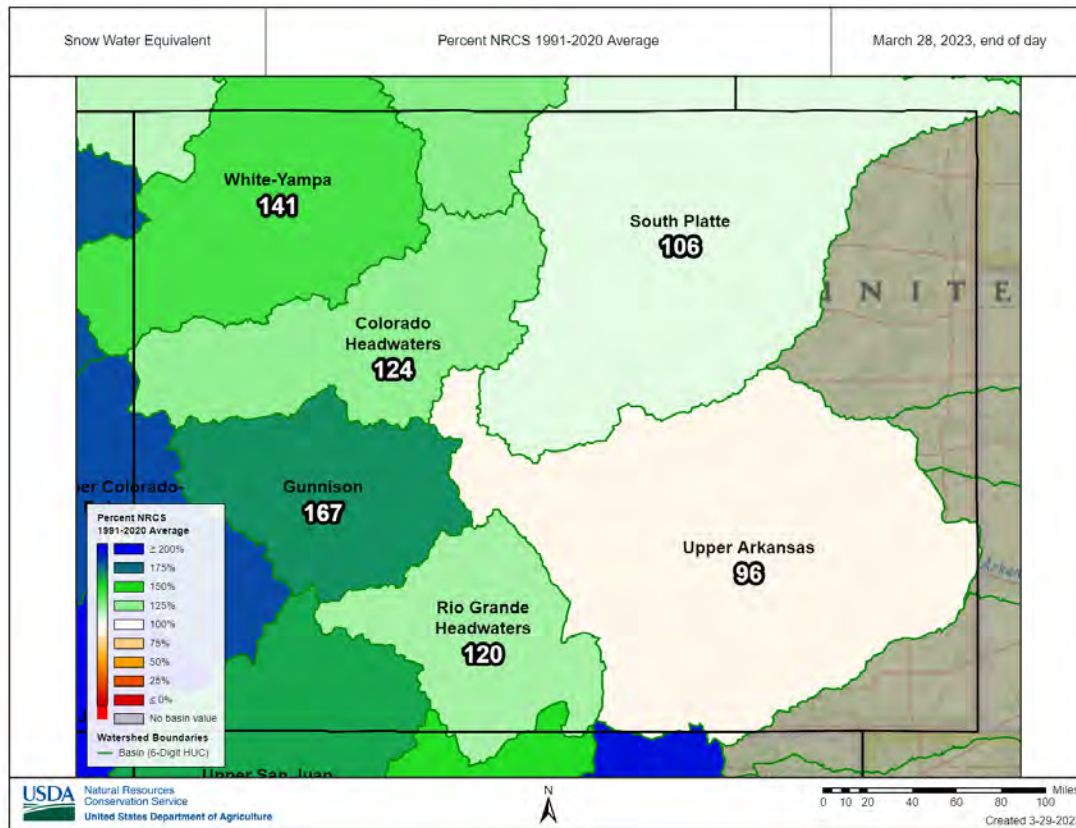


How can we be in drought?

- Media reports on a statewide/basin wide averages
 - 114 snow measurement stations across Colorado
 - Aurora relies on is only 16 of the SNOTEL sites

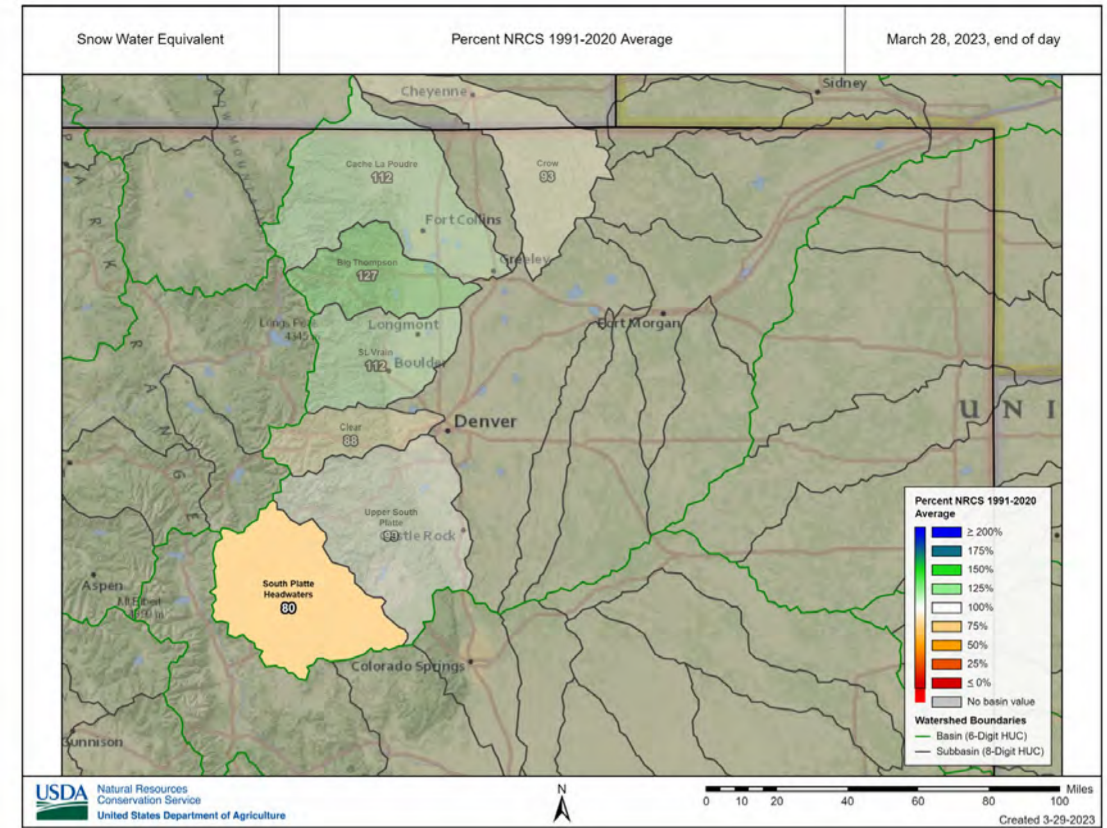
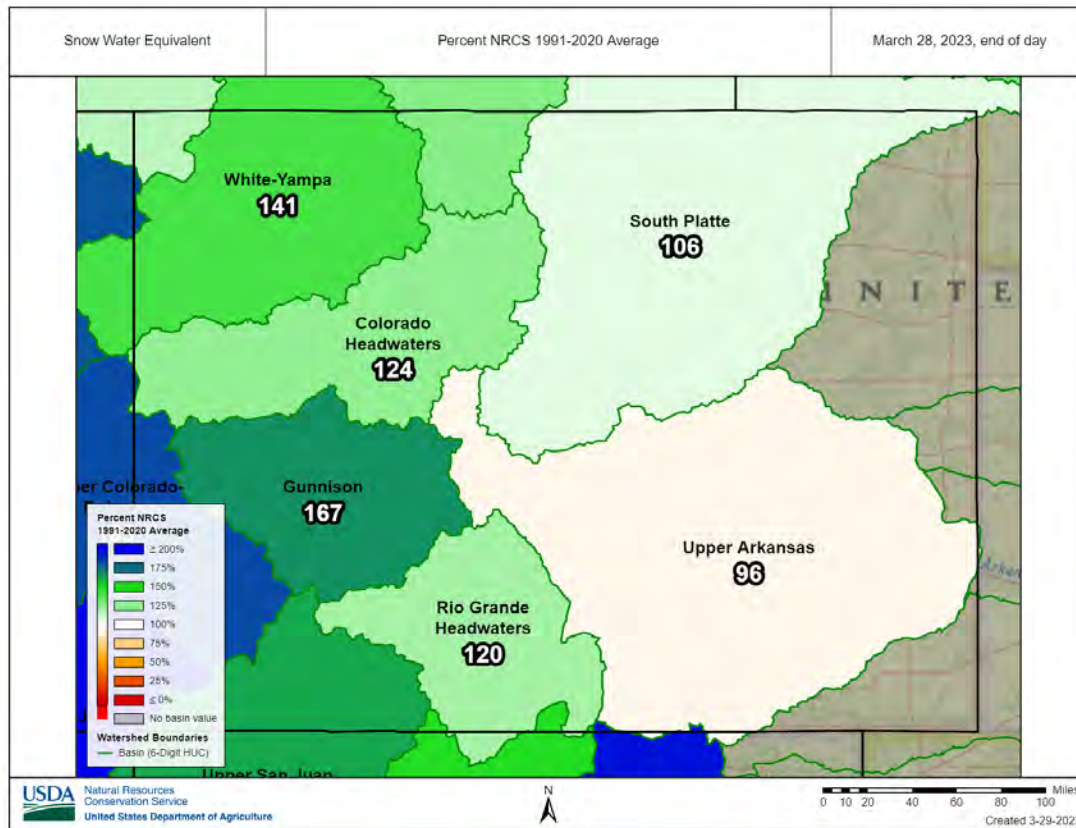


Snowpack to fill reservoirs



WATER

Snowpack to fill reservoirs



WATER

Current Triggers

Water Availability Stage Conditions and Demand Reduction Recommendation				
Water Availability Stage	NORMAL	Stage I SEVERELY DRY	Stage II EXCEPTIONALLY DRY	Stage III EMERGENCY CONDITIONS
Trigger - Months of supply based on current demand	Above 30 months	30-25 months	24-13	12 months or less
Demand Reduction Recommendation (outdoor use only)	0%	20%	50%	100%

Water Management Plan Implementation

- “Water Availability” Resolution from City Council
- Use of “Water Availability” Stages
 - Limits outdoor water use only - Irrigation primarily
 - Day per week restrictions
 - Enforceable through fines attached to water bill
 - Can result in surcharges to rates



AURORA
WATER

Aurora Declares Drought starting May 1

Stage 1 Drought

- Watering maximum 2 days/week
- Variance program allows flexible irrigation scheduling as long as efficiency standards are met (includes a 20% reduction goal)
- Turf grass may go dormant (not dead)
- No fines for grass dormancy



Watering Days

Stage I – Severely Dry – Watering Schedule						
<i>drought surcharge in effect per City Ordinance Section 138-223 - Water rates and charges</i>						
Sun	Mon	Tue	Wed	Thurs	Fri	Sat
EVEN Address Residential customers	<i>Additional City needs</i>	OTHER Multi-family, HOA, Non-residential	ODD Address Residential customers	EVEN Address Residential customers	<i>OTHER</i> Multi-family, HOA, Non-residential	ODD Address Residential customers



AURORA
WATER

Drought Surcharges – Stage I

How it works

- Winter Quarter Average (WQA) – Dec-Jan-Feb usage average
- Only usage above WQA+10% is subject to the surcharge
- 10% added to provide a small cushion
- A Minimum WQA floor of 5,000 gallons is established for residential customers this helps snowbirds and small families
- Irrigation customers are surcharged on all usage

Drought Surcharges – Stage I

	Stage 1	Stage 2	Stage 3
Residential Surcharges			
Up to 110% WQA	\$0.00	\$0.00	\$4.20
Over 110% WQA	\$1.95	\$7.60	\$12.60
Commercial Surcharges			
Up to 110% WQA	\$0.00	\$0.00	\$4.20
Over 110% WQA	\$1.95	\$7.60	\$12.60
Multifamily Surcharges			
Up to 110% WQA	\$0.00	\$0.00	\$4.20
Over 110% WQA	\$1.95	\$7.60	\$12.60
Irrigation Surcharges			
All Usage	\$1.95	\$7.60	\$25.20

Outdoor Water Use & Best Practices



AURORA
WATER

Variance Program

- Allows a property to run irrigation 7 days per week (**each zone max. 2 days/week**)
- Monthly reports comparing actual usage to a recommended use:
 - Adjusted to size of landscape and weather
 - Must stay under 120% of year-to-date recommended
- Drought Stage I
 - 20% outdoor usage reduction factored into recommended use

Your HOA

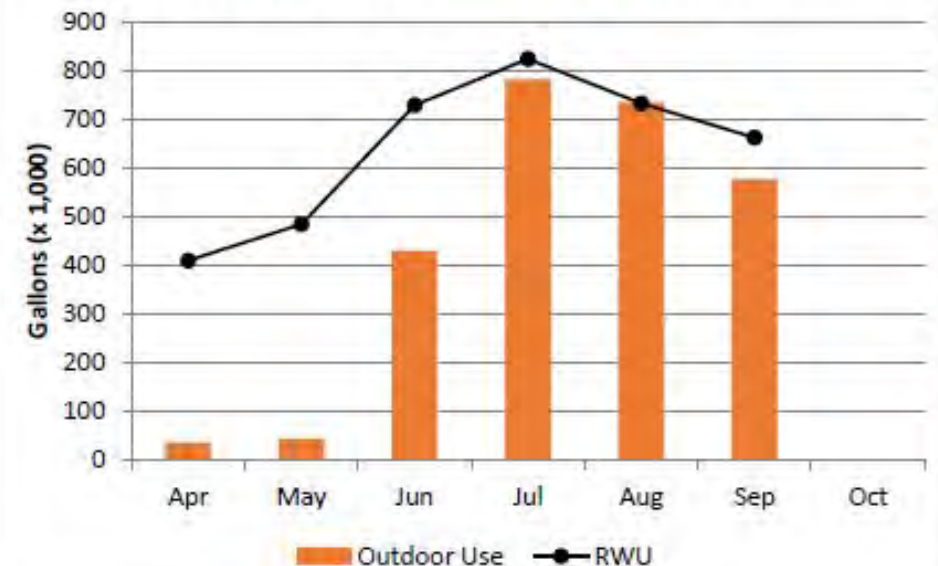
is participating in the
**LARGE PROPERTY WATER
VARIANCE PROGRAM**



AURORA
WATER

2023

Actual vs. Recommended Water Use



Irrigation Efficiency Best Practices: Understand the Property

1. Conduct irrigation assessment
2. Keep notes on sprinkler schedule
3. Map irrigation

Meters

Backflows

Looped system?

Shut-off valves

Controllers

Rain sensors

Zone map

Maintenance boundaries



AURORA
WATER

Irrigation Efficiency Best Practices:

Proper Scheduling

WATERING MONTHS	POP-UPS	ROTOR HEADS	ROTARY
	MINUTES PER ZONE/ 3 TIMES PER DAY		
MAY 2 days per week	7	14	22
JUNE 2 days per week	6	12	19
JULY 2 days per week	7	12	20
AUGUST 2 days per week	6	12	19
SEPTEMBER 2 days per week	5	10	16

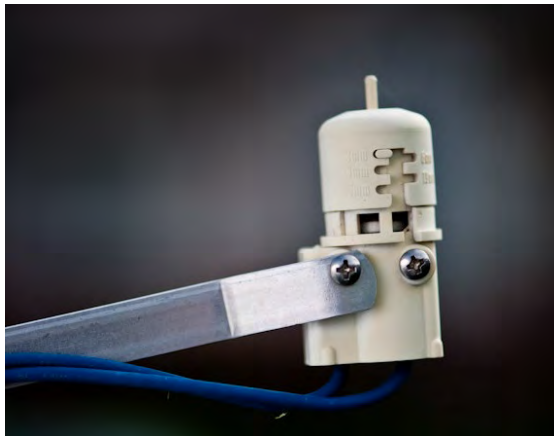
Cycle and Soak

- Cycle three times
- 1 hour between cycles

Permanent restrictions

- No watering between 10 a.m. and 6 p.m.
- Max 3 days/week
(Stage 1 drought: 2 days/week)

Irrigation Efficiency Best Practices: Efficient Parts



Efficient parts:

- Pressure regulation
- Check valves
- Rotary nozzles
- Smart systems

Rebates available:

- Bodies
- Nozzles
- Smart controllers
- Rain sensors

Grass Dormancy

- Dormancy is hibernation, not death
- Temporary: no more than **4 weeks**
- Reduces water consumption by approximately 85% while dormant
- No foot traffic, mowing or fertilizing during dormancy
- Follow industry best practices for reviving turf after dormancy
- Visit our grass dormancy page AuroraGov.org/Dormancy



Water-wise Landscapes

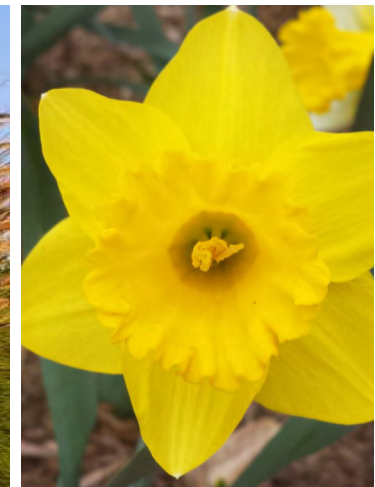


AURORA
WATER

What is Water-wise? Not this.



This is Water-wise!



Grass Replacement Incentive Program

- Remove healthy grass and install a water-wise landscape
 - HOA's: Max. \$50,000
 - Any area with healthy turf
 - Residents: Max. \$4,000 (\$1,000 for labor or tool rental)
 - Front yards and streetscapes only
- Pre-approval and application required
- Multi-year payment schedules

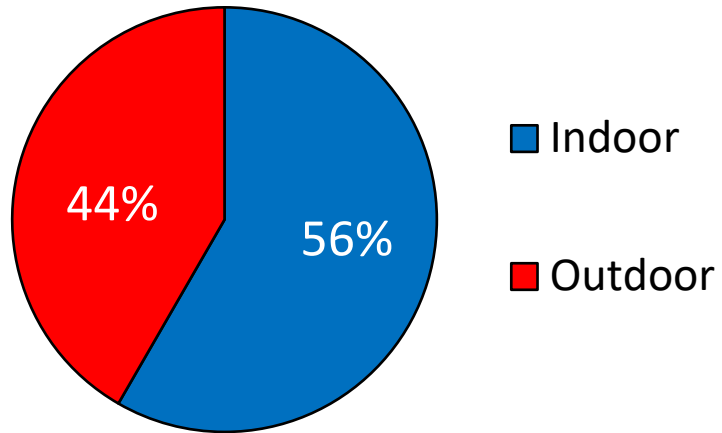


Indoor Water Use & Best Practices

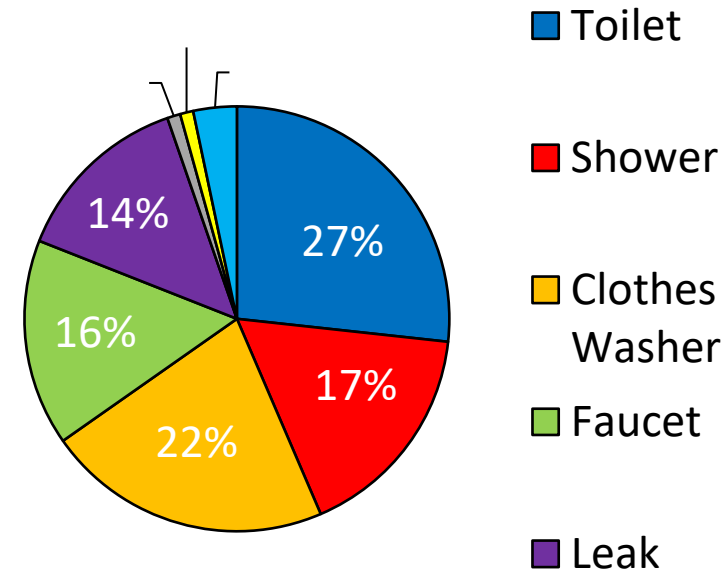


AURORA
WATER

Indoor vs Outdoor Use



Indoor Use Only



1,250 gallons per person per month is considered efficient indoor use in Aurora.

Indoor Best Practices: Check for Leaks, Replace Old Toilets



Toilet tank parts ~ 5 year life
Pressure assist tanks ~ 10 year life

Leaks are often silent
Check toilets for leaks each year

Rebates for 0.8 gpf



Leaks never get better on their own, they only get worse!

Get the Word Out

- Newsletter
- Postcards
- Flyers on doors
- Presentations to boards/residents



Other Ways We Help You Save Water

Indoors

- Free indoor water assessments
- Low-income water efficiency program

Outdoors

- Aurora Water-wise Garden – set up a tour
- Free outdoor water assessments
- Free water-wise designs (residential front yards only)
- Water conservation classes
- Recommendations for HOA design guidelines



AURORA
WATER

What questions do you have?
What would you like to learn more about?



AuroraGov.org/Drou
ght

Water Conservation
conservation@auroragov.org
303-739-7195 ·

